



Planet Audio®

www.planetaudiousa.com

P9754 02.2011
all specifications subject to change without notice
© 2011 Planet Audio



TELEPHONE
888.990.1236
805.988.0215

FAX
805.988.0275

TECHNICAL SUPPORT
www.planetaudiousa.com/support

USER'S MANUAL



Planet Audio®

P9754

**In-Dash Motorized MultiMedia/MP3/CD AM/FM Receiver
with 7-inch Widescreen Touchscreen TFT Monitor
with USB and SD Memory Ports and AV Input**

iPod is a trademark of Apple, Inc., registered in the U.S. and other countries.
Planet Audio is not affiliated with Apple, Inc.

Contents

Thank you for buying this product.

Please read through these operation instruments so you will know how to operate your model properly. After reading please keep this booklet in safe place for future reference.

1 Before You Start

Important Safeguards 4
 About this manual 4
 Precautions 5
 Maintenance 6
 Location & function of the controls 7
 Remote control 9
 Specifications 11

2 Installation

Wiring Connections 12
 Install the Unit 13
 Detach the Unit 15
 Install the Front Panel 16
 Detach the Front Panel 16
 clean the connector 17

3 Common Operations

To Select Source by Menu 18
 Reset the Unit 18
 Turning the Unit On/Off 18
 Volume Control 18
 Setting the Sound Characteristics 18
 EQ Setting 18
 Turning Loudness On/Off 18
 Insert a SD Card 19
 Eject a Disc 19
 Mute Function 19
 Mode Selector 19
 Infrared Sensor 19

4 Main Menu

Main Menu Setup 20
 Video Adjust 20
 Audio Adjust 20
 Source Setup 21
 System Adjust 21

5 DVD/VCD/MP4

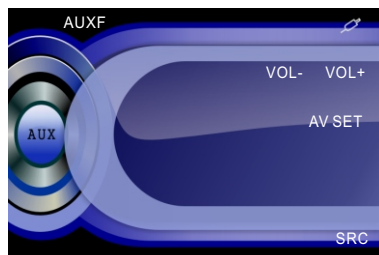
DVD/VCD/MP4 Setup 25
 DVD/VCD/MP4 Play 25
 Selecting Tracks Fast 25
 Number Buttons 25
 Pause the Playback 25
 Stop the Playback 25
 Play tracks at Random 26
 Repeat Playing 26
 Skip backward/forward/F.F/F.REW the Playback 26
 System Switch 26
 Slow Motion Playback 26
 Increase Picture Size 26
 On Screen Display 26
 Setting the Playback Time 27
 Changing Audio Language 27
 Changing the Subtitle Language 27
 Changing the Viewing Angle 28
 Selecting Channel 28
 Program Playing 28
 Playing PBC(Menu) 28
 Selecting Menu 29
 DVD Setup Menu 29

Additional Information

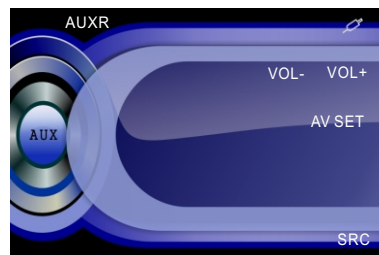
Common Symptoms	Cause	Solution
There is no power.	The car ignition is switched off	If the power supply is properly connected to the car accessory, switch the ignition key to ON or ACC.
	The fuse has blown.	Replace with same amperatge fuse rate.
The disc cannot be loaded.	There is another disc inside the player	Remove the disc from the player
The device does not work correctly (EJECT, LOAD, PLAY)	Inserted disc is upside down	Insert the compact disc with the label facing upward
	The surface of disc is extremely dirty, Scrached or damaged.	Clean the disc or try another disc, if the new disc works correctly, the first disc is damaged.
	Temperature inside the car is too high.	Cool off until the ambient temperature returns to normal.
There is no sound.	The volume control is set too low.	Turn up the volume properly.
	The device has not been wired correctly.	Check the connections according to the wiring diagram.
The operation keys do not work	1. The built-in microprocessor is not operating properly. 2. Front panel is not properly attached into its place	1. Switch the device off and on again or press the RESET button. 2. Remove and reinstall the front panel.
The sound of the disc player skips	The installation angle is more than 30 degrees	Adjust the installation angle to less than 30 degrees
	The surface of the road is uneven.	Wait until the road becomes smoother before playing the disc.
	The surface of disc is extremely dirty,scrached or damaged.	Clean the disc or try another disc, if the new disc works correctly, the first disc is damaged.
No radio reception.	The antenna cable is not connected.	Insert the antenna cable firmly into the antenna socket of the unit.
In automatic search mode the radio does not stop at a transmitting station.	The transmission signals are too weak.	Tune in to a radio station manually.

AUX Touch Screen Menu

Press SRC to turn to AUXF SET:



Press SRC again to turn to AUXR SET:



In AUX mode, select AV SET:



AV SET

For more details to adjust AUDIO, VIDEO and SYSTEM (Auto 1: PAL, NTSC, SECAM), (Auto 2: P-M, P-N). To adjust AUDIO and VIDEO please refer to pages 18 to 19.

- VOL- To decrease the volume
- VOL+ To increase the volume
- SRC Back to the source menu.

6 CD/MP3/SD/USB

- CD/MP3/SD/USB Setup 36
- CD/MP3/SD/USB Play 36
- Selecting Tracks Fast 36
- Repeat Playing 37
- Number Buttons 37
- Selecting Track 37
- Stop Play 37
- Playing Tracks at Random 37
- Pause the Playback 37
- Skip backwafd/forward/F.F/F.REW the Playback 37
- On Screen Display 38
- Program Playing 38
- Exit SD Card 38
- Exit USB 38

7 Tuner

- Listening to the Radio 39
- Band Selector 39
- Manual/Automatic Tuning 39
- DX/LOC Selector 39
- Selecting The stored Station 39
- MO/ST Selector 40
- Scanning/Memorizing Stations Automatically 40
- On Screen Display 40
- Goto FREQ 40
- Number Buttons 40
- RDS Setup 41
- Alternative Frequencies 41
- Traffic Alarm 41
- Program Type 41

8 AUX

- AUX Touch Screen Menu 42

9 Additional Information

- Simple Troubleshooting Guide 43

Before You Start

IMPORTANT SAFEGUARDS About this manual

- 1 Be sure to connect the color coded leads according to the diagram. Incorrect connections may cause the unit to malfunction or damage the vehicle's electrical system.
- 2 Be sure to connect the speaker (-) leads to the speaker (-) terminal. Never connect the left and right channel speaker cables each other or to the vehicle body.
- 3 Make sure all the connections are completely correct before turning on your unit.
- 4 When replacing the fuse(s), the replacement must be of the same amperage as shown on the fuse holder.
- 5 Do not block vents or radiator panels. Blocking them will cause heat to build up inside and may result in fire.
- 6 To lest the driver distract his attention from, please install the unit in an apt place.
- 7 Using the unit after starting the engine, otherwise the unit can not be started, because the electric energy of battery was used up.
- 8 The unit must be screened from direct sunlight, or the electric energy of battery will be wasting for the high temperature.
- 9 Do not use the unit in extreme high temperature or such low temperature conditions, and also avoid humidity and direct sunlight.
- 10 Take care of the magnetism of the unit. Do no put the credit card, cassette or watch around the unit, or they would be broken or some information in them lose.
- 11 To lest disturb the video frequency, keep far away from the unit when using your phone.
- 12 Do not put the remote control under high temperature or where the sun strikes it, or else the control remote can not work normally.

This unit features a number of sophisticated functions ensuring superior operation. All the functions have been designed for the easiest possible use, but many are not self-explanatory. This manual will help you understand the functions and operations of the unit. This manual main explains **remote control operation**. However, in addition to those functions related with DVD/VCD/CD/MP3/MP4 operation that can only be operated by the remote control, there are also functions can be operated by the buttons provided for the main unit.

WARNING!

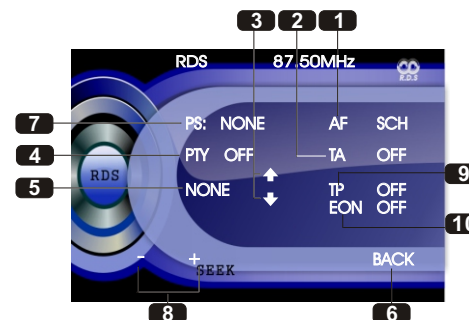
Do not watch or operate the video monitor while driving. Doing so is unsafe and can distract the driver, which may cause an accident.

In some states or countries it is illegal for a driver to operate or view a video monitor while driving. It may also be illegal for a passenger to operate or view a video monitor in a moving vehicle even if the driver is not watching it.

Be sure that the installation and operation of this product is in compliance with local rules and regulations.

Tuner

RDS Setup



- 1 **AF**
Press it to activate AF function.
- 2 **TA**
Press it to activate TA function.
- 3 **↑ / ↓**
Press it to select PTY CODE.
- 4 **PTY**
Press it to activate PTY function.
- 5 During PTY ON, press this button to search the playing track's type.
- 6 **BACK**
Press it to turn to listening to the radio.
- 7 **PS:**
TO display the current RDS station's programs information.
- 8 **SEEK +/-**
Press it to tune automatically.
- 9 **TP(Traffic Program)**
It just shows the status, it can not be set. When it shows TP, there is no station playing. Traffic Program: when it shows TP ON, the traffic program is playing; and shows TP Search, it is searching the station which is playing traffic program.
- 10 **EON ON(Enhanced Other Networks information)**
It just shows the status, it can not be set. When EON ON shows, it means when a station is playing traffic notice program, RDS will remind the user to search and listen to the station.

Alternative Frequencies

Briefly pressing **26** AF to activate the auto searching station function. When AF is on, the RDS signal is weak or there is not, it will be found in the preset frequencies and the whole bands.

Note:

- * It is also performed by pressing **1** in the monitor or EQ/AF on the main unit.

Traffic Alarm

Briefly pressing **25** TA to activate the traffic alarm function. When AF is on, there is **TA** displays on LCD, or else, if there is no TP information, the mode will search TP station automatically.

The **TA** is green when it is played by a station, if not, it is yellow.

When TA is playing, the volume will be adjusted to a TA level automatically. When in other modes (such as DVD, AUX), if a TA program is played. The mode will skip to the RDS status automatically. It will resume to the primary mode after the TA is over.

Note:

- * Briefly press LOU/TA on the head unit or **2** in the monitor performs the same function.
- * When TA is off, there are no **TA** on LCD.

Program Type

Briefly pressing **7** PTY to activate PTY function.

When PTY is on, **PTY ON** appears in the monitor, you can press **UP/DOWN** to select the program type, and then press PTY CODE to search the special program. And the monitor displays **PTY SEARCH**.

If PTY is off, **PTY OFF** appears in the monitor, the searching is stopped.

Note:

- * It is also performed by pressing **4** in the monitor.

MO/ST Selector

During radio status, you can press **6 ST** button on the remote control to select **MONO** mode or **STEREO** mode. Stereo reception is charged when “STEREO” appears. It is switched to MONO mode when “MONO” appears.

Note:

- * It is only valid on remote control.
- * Switch to MONO compulsively to improve the listening quality when weak signal.
- * It is only valid in FM tuning.

Scanning/Memorizing Stations Automatically

During radio status, briefly press **4 AMS** button on the remote control to scan each stored station 6 seconds respectively which stored in **23 Number Buttons (from 1 to 6)**. You can press the corresponding Number Buttons or AMS button when your desired station is charged. And it starts playing that station.

When press and hold **4 AMS** button, it will activate automatically memory storing function. The radio automatically selects a station and has it stored in any one of the **23 Number Buttons (from 1 to 6)**.

Note:

- * The unit can be stored up to 6 stations for each band.
- * It is only valid on remote control.

On Screen Display

During radio status, press **8 OSD** to display the edition information.

Goto FREQ

Press **2 GOTO**, and the monitor shows: FREQ, then press the Number to input the valid frequency, then the TV program will be played.

Note:

- * It is only valid on remote control.
- * It is only valid when GOTO FREQ is on in main menu.

Number Buttons

During radio status, press **Number Buttons** to receive the stored stations.

During radio status, **Number Buttons (from 1 to 6)** can help you store your favorite station. You can follow the steps as below:

- 1 When receiving a station, press and hold any one of the **Number Buttons (from 1 to 6)** until the number appears on the **LCD**, which indicates that station is already stored in the corresponding number button.
- 2 Press and hold **4 AMS** button to receive stations automatically, and store them in 1 to 6 number respectively.
- 3 Press and hold another number button more than 2 seconds when listening in a station in one number button's, the station will be stored in that number button.

Note:

- * Press **5** in the monitor performs the same function.

PRECAUTIONS

This unit can play the following discs only:

Type of disc	Recorded material	Size of disc
DVD	Sound and moving pictures	12cm
VCD	Sound and moving pictures	12cm
CD	Sound only	12cm
MP3	Sound only	12cm
MPEG-4	Sound and moving pictures	12cm

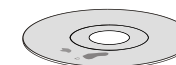
NOTE: The unit is compatible with VCD1.0/1.1/2.0/3.0 version and DVCD disc.

- **Do not attempt to modify the unit, modifying the unit may cause an accident.**
- **Stop the vehicle before carrying out any operation that could interfere with your driving.**
- **Do not work in extremely high or low temperature. Be sure the temperature inside the vehicle is between +60° C and -10° C before turning on your unit.**
- **To enjoy optimum sound and images while playing, handle the discs as follows:**

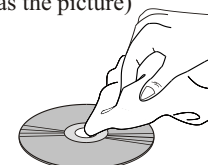
——Do not use your CDs with paste residue or ink attached.



——Do not use CDs with labels or stickers attached, which may leave a sticky residue while beginning to peel off. (Shown as the picture)



——Clean the discs with an optional cleaning cloth. Wipe each disc from the center out. (Shown as the picture)



——Handle the disc by its edge to keep the disc clean, and do not touch the surface.



Maintenance

Replacing the Fuse

Make sure the amperage matches the specified value when replacing the fuses. If the fuse is blown, check the power connection and replace with a new one. If the same problem occurs, it would be subjected to the malfunction. In such cases, please consult to the nearest service dealer.

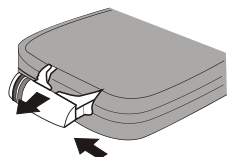
⚠ Warning

Never use the fuse with the rated amperage more than that supplied to your unit, otherwise it will damage the unit.

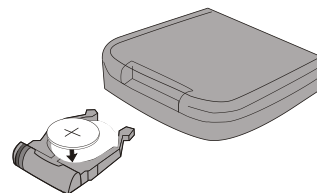
Replacing the Battery

When the range of the operation of the card remote control becomes short or no functions while operating. Replace the lithium battery with a new button cell (CR2025). Make sure the battery polarity before replace.

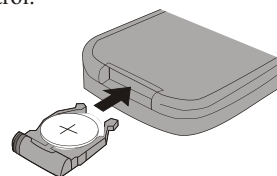
Gently pull out the Battery Holder while pressing the Stopper.



Put the button-type battery with mark(+) upward into the Battery Holder.



Insert the Battery Holder into the Remote Control.



Precautions on Using Lithium Battery

Always keep the lithium battery beyond children's reach. In case swallowed, see a doctor immediately.

Cleaning the battery with a dry cloth, to ensure its perfect connected.

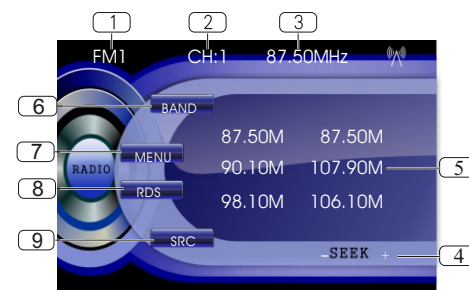
Make sure the proper polarity when loading with the battery.

To prevent short circuit, do not use metal tweezers to clip the battery.

⚠ Warning!

Improper handle with the battery may lead to explosion.
It cannot be charged, disassembled or thrown into a fire.

Listening to the radio



① Band Indicator

Shows which band the radio is tuned to.

② Preset Number Indicator

Shows what preset has been selected.

③ Frequency Indicator

Shows which frequency the tuner is tuned.

④ SEEK+ / SEEK-

Briefly press to tune by the presettable range, hold and press to tune automatically.

⑤ The 6 stations of the current band.

Briefly press to select station, hold and press to save the current station to one of the 6 stations.

⑥ BAND

To select the bands.

⑦ MENU

Press to SYSTEM setup.

⑧ RDS

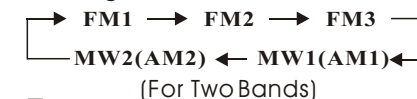
Press to RDS setup.

⑨ SRC

Press this button to select the signal source.

Band Selector

During radio status, repeatedly press ③ BAND button to select bands in the following order:



□ Note:

* Press BAND on the head unit or ⑥ in the monitor performs the same function.

Manual/Automatic Tuning

Manual Tuning: Briefly press ② (▶ or ◀) button on the remote control to select the different band.

Automatic Tuning: Press and hold ② (▶ or ◀) button the radio automatically searches a station downward or upward respectively and plays when it finds a station.

□ Note:

* Press ④ in the monitor or ◀ / ▶ on the main unit also performs the same function.

DX/LOC Selector

During radio status, press ⑤ LOC button to select strong or weak station reception. "LOC ON" appears on the display and only local station is available. when it disappears both distance and local stations can be received.

□ Note:

* The function is only valid on remote control.
* The function is invalid in AM tuning.

Selecting the Stored Station

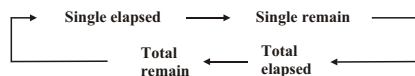
During radio status, press ⑦ ▲ button to select the stored station upward, press ▼ to select the stored station downward.

□ Note:

* The function is only valid on remote control.

On Screen Display

During **CD** status, press **OSD** button the display shows:



Note:

- * This function is operated by using the remote control.

Program Playing

During CD mode, press **13** **PROG**, the TFT displays the program menu. Press **NUMBER BUTTONS** to select the track Number and then press **27** to move the cursor to **START**, press **ENTER** to start program playing; move the cursor to EXIT and press ENTER to exit the program playing. Move the cursor to **⏮** and press ENTER to the previous page; move the cursor to **⏭** and press ENTER to the next page. During this process, press **18** **■** to cancel the program playing.

Note:

- * The function is only valid on remote control.
- * Press **22** **CLEAR** to clear the mistake input.

Eject SD Card

Push SD card to exit it.

During SD playing mode, to exit SD card to switch to Disc mode; if there is no disc in the head unit, it will switch to USB mode, or else, it will switch to Radio mode. During other modes, to exit SD card to keep the previous mode.

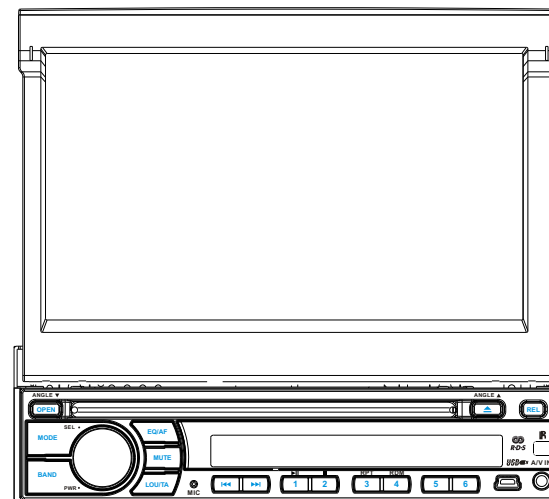
Eject USB

Pull USB to exit it.

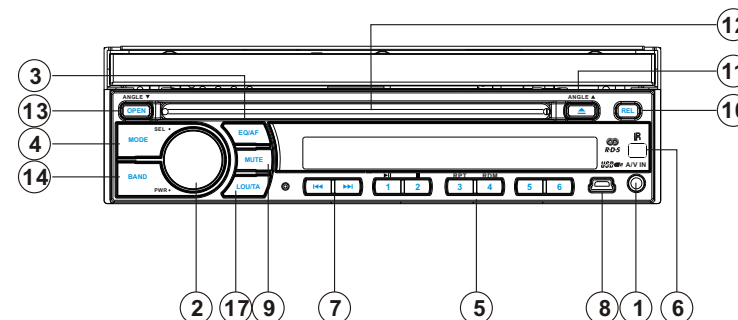
During USB playing mode, to exit USB to switch to Disc mode; if there is no disc in the head unit, it will switch to SD Card mode, or else, it will switch to Radio mode. During other modes, to exit USB to keep the previous mode.

Location of the Controls

The Expanding



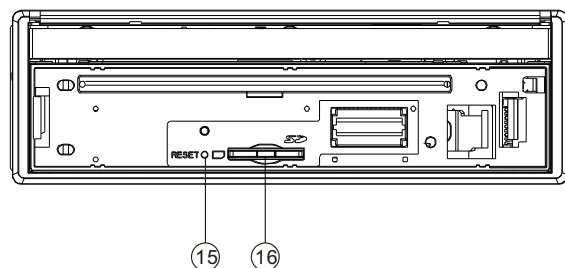
The Whole



Before You Start

CD/MP3/SD/USB

The Base



- | | |
|--|---|
| ① A/V IN | ⑧ USB Socket |
| ② SEL/VOL (Power/Volume adjust/Setting of the sound characteristics) Button
During the waiting mode, briefly press it to turn on the unit, press and hold it to turn off it. Rotate the button clockwise to increase the volume and anti-clockwise to decrease it.
Briefly press it to set the sound characteristics and rotate it to set the terms. | ⑨ MUTE |
| ③ EQ/AF(equalizer/alternative frequency) | ⑩ REL (release the front panel) Button |
| ④ MODE
Press it to switch the mode. | ⑪ ▲ Eject Button
Press it to insert or eject a disc. |
| ⑤ NUMBER Button/Pause/Stop/Repeat/RDM
During radio mode, press it to select preset station.
During playback, the functions of ►, ■, RPT, RDM can be opened. | ⑫ Disc Loading Slot |
| ⑥ REMOTE Infrared Sensor | ⑬ OPEN Button |
| ⑦ ◀ / ▶ [Previous Track/Adjust frequency forward/ Next Track/Adjust frequency backward] Button | ⑭ BAND (band selector) Button |
| | ⑮ RESET Button |
| | ⑯ SD Card Slot |
| | ⑰ LOUD/TA(loudness/traffic alarm) Button |

Repeat Playing

During CD/MP3/SD/USB playback, press **⑮ RPT** to replay the current track, press it again to cancel this function.

Note:

- * Pressing **⑤ RPT** on the main unit also performs the same function.
- * The default setting is Disc Repeat.

Number Buttons

Press one of **⑮ Number Buttons(0~9)** to select a track to play automatically.

Note:

- * Press track region and the screen shows the number keys, touch the number to select tracks.
- * Press **⑳ CLEAR** to clear the mistake input.

Selecting Track

During CD playback, first press **② GOTO**, and TFT shows : *disc go to:--*, press your desired time of the playback by using number buttons.
Second press GOTO button, *track go to:--* appears on TFT, also input your desired numbers to play the current time of your selection.
During MP3/SD/USB mode, first press **② GOTO** and the TFT shows: *--*. Then press NUMBER BUTTONS to input the MP3/SD track's Number to play it; secondly press **GOTO** button, and the TFT shows : *--*, now input the desired time to play the current track at this point.

Note:

- * This function is operated by using the remote control.
- * Press **⑳ CLEAR** to clear the mistake input.

Stop Play

During CD/MP3/SD/USB playback, Press **⑮ ■** to stop the playback.

Note:

- * Press **■** in the monitor perform the same function.

Playing Tracks at Random

During CD/MP3/SD/USB playback, press **⑮ RDM** button on the remote control to play any track at random under the directory which you select. Press it again to return to normal playing.

Note:

- * This function is operated by using the remote control.

Pause the Playback

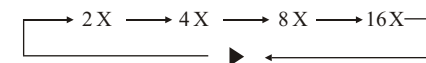
During CD/MP3/SD/USB playback, Press **⑰ ||** to switch between play and pause.

Note:

- * Press **||** in the monitor or **||** on the head unit performs the same function.

Skip backward/forward/F.F /F.REW the playback

Press **⑳ ◀ or ▶** on remote control to perform fast reward or fast forward.

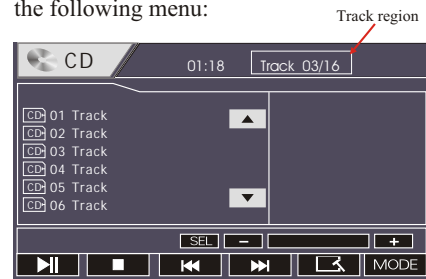


Note:

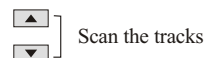
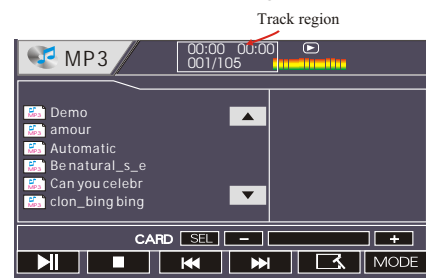
- * Press and hold **◀ / ▶** on the head unit also performs the same function.

CD/MP3/SD/USB Setup

During CD playback, touch the screen shows the following menu:



During MP3/SD/USB playback, touch the screen shows the following menu:



Scan the tracks

CARD To show SD card or USB

SEL Sound characteristics

- Decrease volume level, adjust some items

+ Increase volume level, adjust some items

Play/pause

Stop

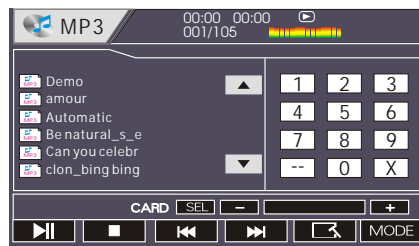
Previous track

Next track

DVD setup menu

MODE Mode selector

Track Region: Press this region and the screen shows the following menu: number keys appears, touch the number to select tracks. Touch the "X" to exit this menu.

**CD/MP3/SD/USB Play**

Insert a CD/MP3 disc into the slot, the unit will play automatically.

Take away the rubber plug ⑧ USB or ⑩ SD card, then insert USB or SD card which will be played automatically.

If there have be loaded a disc/USB/SD card, press SOURCE to switch to play, or back to play source to select menu, press DVD to play.

Note:

- * Press **MODE** on the head unit to switch to DVD mode. When SD card and USB were inserted into, press this key again and again to switch among SD card, USB and disc.
- * Press **MODE** in the monitor to turn to mode switch.
- * At present, our products can only support up to 16G of SD or USB.

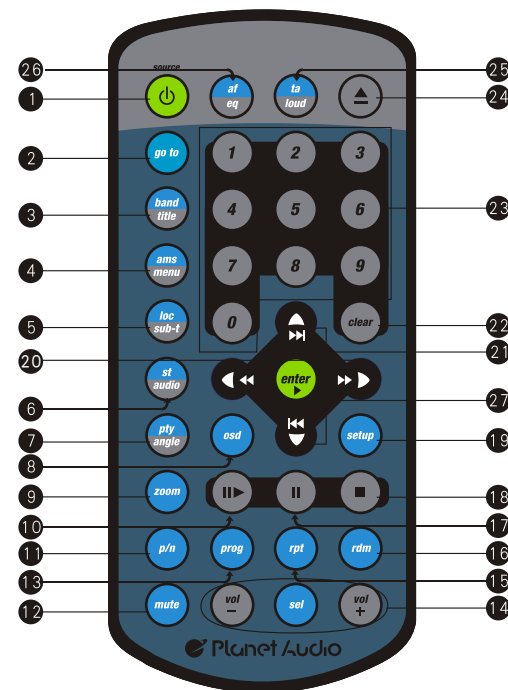
Selecting Tracks Fast

During MP3/SD/USB playback, press ②⓫ to play previous track, press ②⓭ to play next track.

During CD playback, first press ②⓫ to return to the beginning of the current track, press ②⓫ again within 3 seconds to play previous track, press ②⓭ to play next track.

Note:

- * Press ⑦⓫ / ⓭ button on the head unit or ⓫ and ⓭ in the monitor perform the same function.
- * In CD/MP3/SD/USB mode, you can press track's Number or name to play.

Remote Control

Tips:

For more information as to replacing battery, please refer to **Replacing the Battery** on page 6.

Before You Start

DVD/VCD/MP4

- 1 SOURCE/PWR
- 2 GOTO (playing time/track)
- 3 BAND/TITLE
- 4 AMS/MENU
- 5 LOC/SUB -T
- 6 ST/AUDIO (mono or stereo/language or channel selector)
- 7 PTY/ANGLE
- 8 OSD
Briefly press it to show the current information, press and hold it to show the current setup.
- 9 ZOOM (zoom in or zoom out)
- 10 (Slow Forward/Rewind)
- 11 P/N(system adjusting)
- 12 Mute
- 13 PROG(Program playing)
- 14 VOL+/VOL-/SEL
- 15 RPT(Repeat Playing)
- 16 RDM (Playing Tracks at Random)
- 17 (Pause/Play)
- 18 (Stop Playing)
- 19 SETUP
- 20 (F.R/F.F)
- 21 (Previous/Next Track)
- 22 CLEAR
- 23 0~9 (Number) Buttons
- 24 (Eject Button)
- 25 TA/LOUD(traffic alarm/loudness)
- 26 AF/EQ (alternative frequency/equalizer) Button
- 27 (Left/Right/Up/Down ENTER)

---Preferences page---

Default Example showing how to set load factory setting:

(Press ▲ or ▼)

(Press ►, ▲ or ▼, then press ENTER)

--Preference Page--

TV Type	Auto
Audio	Eng
Subtitles	Eng
DVD Menu	Eng
Parental	
Change PSW	
Default	

Go to language page

➡

--Preference Page--

TV Type	Auto
Audio	Eng
Subtitles	Eng
DVD Menu	Eng
Parental	
Change PSW	
Default	Reset

Reset to the factory settings

---Preferences page---

DVD Menu

Example showing how to set Disc Menu Language:

(Press ▲ or ▼)

--Preference Page--

TV Type	Auto
Audio	Eng
Subtitles	Eng
DVD Menu	Eng
Parental	
Change PSW	
Default	

Go to language page



(Press ►, ▲ or ▼, then press ENTER)

--Preference Page--

TV Type	Auto	English
Audio	Eng	French
Subtitles	Eng	Spanish
DVD Menu	Eng	Chinese
Parental		Japanese
Change PSW		Korean
Default		Russian
		Thai

Set the DVD menu language

Parental

Example showing how to set parental control:

(Press ▲ or ▼)

--Preference Page--

TV Type	Auto
Audio	Eng
Subtitles	Eng
DVD Menu	Eng
Parental	
Change PSW	
Default	

Go to language page



(Press ►, ▲ or ▼, then press ENTER)

--Preference Page--

TV Type	Auto	2 G ▲
Audio	Eng	3 PG
Subtitles	Eng	4 PG 13
DVD Menu	Eng	5 PGR
Parental		6 R
Change PSW		7 NC 17
Default		8 Adult
		Off

Set parental control

Change PSW

Example showing how to set password, and the default password is 8888.

(Press ▲ or ▼)

--Preference Page--

TV Type	Auto
Audio	Eng
Subtitles	Eng
DVD Menu	Eng
Parental	
Change PSW	
Default	

Go to language page



(Press ►, ▲ or ▼, then press ENTER)

--Preference Page--

TV Type	Auto	
Audio	Eng	
Subtitles	Eng	
DVD Menu	Eng	
Parental		
Change PSW		Change
Default		

Change the password

Specifications

General

Power Requirement	14.4V DC (11-16V allowable)
Load Impedance	4Ω
Max.Power Output	85W x 4
Tone Controls	±7dB Bass 100Hz Treble 10KHz
Dimensions	Approx.197x178 x 50 mm (d/w/h)
Weight	Approx.2.7kg

FM Section

Tuning Range (Optional)	87.5-108(MHz) (Europe) 87.5-107.9(MHz) (U.S.A.)
IF Range	10.7MHz
Usable Sensitivity (-30dB)	10dBuV
Signal-to-noise Ratio	50dB
Stereo Separation	30dB (1KHz)
Frequency Response	40Hz-12KHz

AM Tuner Section

Frequency Range (Optional)	522-1620(KHz) (Europe) 530-1710(KHz) (U.S.A.)
IF Range	450KHz
Usable Sensitivity (-20dB)	32dBuV

VCD/CD Player Section

VCD Signal System	AUTO/PAL/NTSC
Signal-to-noise Ratio	60dB
Separation	55dB(1KHz)
Distortion	0.3%

DVD Player Section

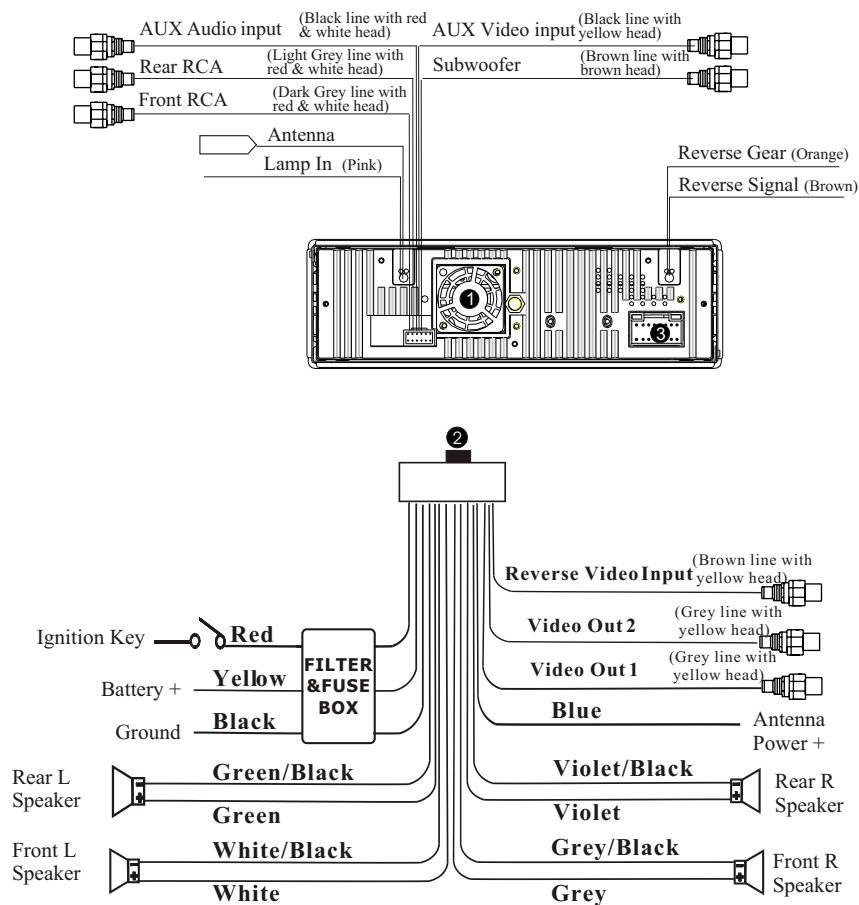
DVD Signal System	AUTO/PAL/NTSC
Channels	2
Frequency Response	40Hz to 16KHz
Signal-to-noise Ratio	60dB
Separation	60dB

Note:

Due to continuous product improvement, specifications and design are subject to change without prior notice.

Installation

Wiring Connection



- ① Fan Window ③ Output Socket(Female)
- ② Output Plug(Male)

DVD/VCD/MP4

---Preference page---

TVType

Example showing how to set TV type:

(Press ▲ or ▼)

(Press ►, ▲ or ▼, then press ENTER)

--Preference Page--

--Preference Page--

TVType	Auto
Audio	Eng
Subtitles	Eng
DVD Menu	Eng
Parental	
Change PSW	
Default	

TVType	Auto	PAL
Audio	Eng	Auto
Subtitles	Eng	NTSC
DVD Menu	Eng	
Parental		
Change PSW		
Default		

Go to language page

Select the TV system

Audio

Example showing how to set Audio language:

(Press ▲ or ▼)

(Press ►, ▲ or ▼, then press ENTER)

--Preference Page--

--Preference Page--

TVType	Auto
Audio	Eng
Subtitles	Eng
DVD Menu	Eng
Parental	
Change PSW	
Default	

TVType	Auto	English
Audio	Eng	French
Subtitles	Eng	Spanish
DVD Menu	Eng	Chinese
Parental		Japanese
Change PSW		Korean
Default		Russian
		Thai

Go to language page

Set the audio Language

Subtitles

Example showing how to set subtitle language:

(Press ▲ or ▼)

(Press ►, ▲ or ▼, then press ENTER)

--Preference Page--

--Preference Page--

TVType	Auto
Audio	Eng
Subtitles	Eng
DVD Menu	Eng
Parental	
Change PSW	
Default	

TVType	Auto	English
Audio	Eng	French
Subtitles	Eng	Spanish
DVD Menu	Eng	Chinese
Parental		Japanese
Change PSW		Korean
Default		Russian
		Thai

Go to language page

Set the subtitles Language

--Dual mono/DRC Setup--

Dual Mono

Example showing how to set stereo mode:

(Press ▲ or ▼)

--Dual mono/DRC Setup--

Dual Mono
Dynamic



(Press ►, ▲ or ▼, then press ENTER)

--Dual mono/DRC Setup--

Dual Mono Stereo
Dynamic L-Mono
R-Mono
Mix-Mono

Dual mono/DRC setup

Dual Mono Setup

Dynamic

Example showing how to set dynamic range compression:

(Press ▲ or ▼)

--Dual mono/DRC Setup--

Dual Mono
Dynamic



(Press ►, ▲ or ▼, then press ENTER)

--Dual mono/DRC Setup--

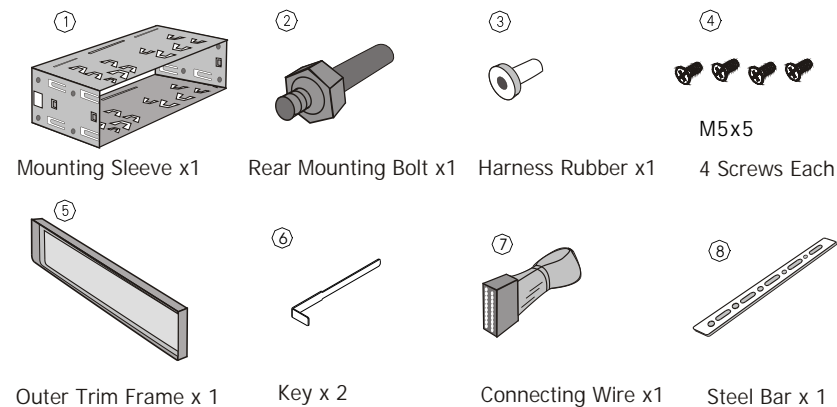
Dual Mono
Dynamic
FULL
3/4
1/2
1/4
OFF

Dual mono/DRC setup

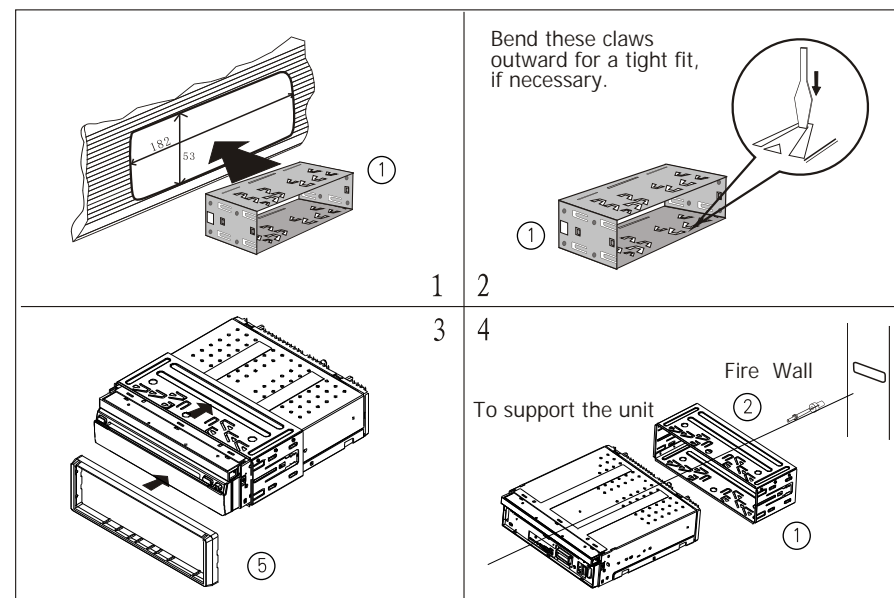
Deactivate DRC

Install the Unit

Main Parts List



Installation Method ①: DIN Front-Mount



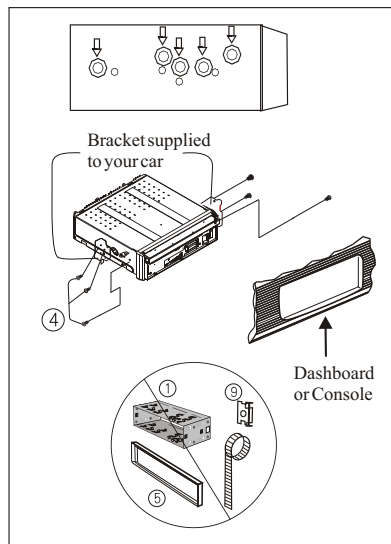
Install the Unit

Installation Method

Installation using the screw holes at the sides of the unit.

Select a position where the screw holes of the mounting bracket supplied with the car and the screw holes of the main unit become aligned (are fitted), and tighten the screws (see ④ at 2 places on each side). And then fasten them to the car.

- Note:
- Outer Trim Frame ⑤ and Mounting Sleeve ① are not used for installation method.



--General Setup Page--

Captions

Example showing how to set captions on/off:

(Press ▲ or ▼)

--General Setup Page--

TV shape	Wide
Angle Mark	On
OSD Language	Eng
Captions	Off
Screen Saver	On

Go To General Setup Page

(Press ►, ▲ or ▼, then press ENTER)

--General Setup Page--

TV shape	Wide	
Angle Mark	On	
OSD Language	Eng	
Captions	Off	On
Screen Saver	On	Off

Closed Captions

Screen Saver

Example showing how to set Screen Saver on/off:

(Press ▲ or ▼)

--General Setup Page--

TV shape	Wide
Angle Mark	On
OSD Language	Eng
Captions	Off
Screen Saver	On

Go To General Setup Page

(Press ►, ▲ or ▼, then press ENTER)

--General Setup Page--

TV shape	Wide	
Angle Mark	On	
OSD Language	Eng	
Captions	Off	
Screen Saver	On	On

Set the Screen Saver

--General Setup Page--

TV Display

Example showing how to set TV Display mode:

(Press ▲ or ▼)

--General Setup Page--

TV shape	Wide
Angle Mark	On
OSD Language	Eng
Captions	Off
Screen Saver	On

Go To General Setup Page

(Press ►, ▲ or ▼, then press ENTER)

--General Setup Page--

TV shape	Wide	Normal/PS4/3
Angle Mark	On	Normal/LB4/3
OSD Language	Eng	Wide16:9
Captions	Off	
Screen Saver	On	

Set the TV shape

Angle Mark

Example showing how to set picture mode:

(Press ▲ or ▼)

--General Setup Page--

TV shape	Wide
Angle Mark	On
OSD Language	Eng
Captions	Off
Screen Saver	On

Go To General Setup Page

(Press ►, ▲ or ▼, then press ENTER)

--General Setup Page--

TV shape	Wide	
Angle Mark	On	On
OSD Language	Eng	Off
Captions	Off	
Screen Saver	On	

Set the multi-angle display

OSD Lang

Example showing how to set language mode:

(Press ▲ or ▼)

--General Setup Page--

TV shape	Wide
Angle Mark	On
OSD Language	Eng
Captions	Off
Screen Saver	On

Go To General Setup Page

(Press ►, ▲ or ▼, then press ENTER)

--General Setup Page--

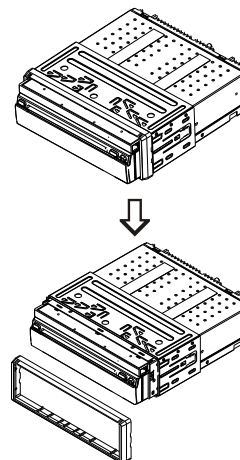
TV shape	Wide	English
Angle Mark	On	French
OSD Language	Eng	German
Captions	Off	Spanish
Screen Saver	On	Italian
		Dutch
		Portuguese

Set the OSD Language

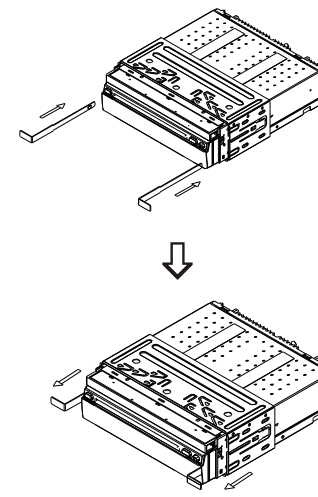
Detach the Unit

Detach the front panel at first. For more details, please refer to *detach the front panel*.

1. After the front panel was detached, remove the outer trim frame.



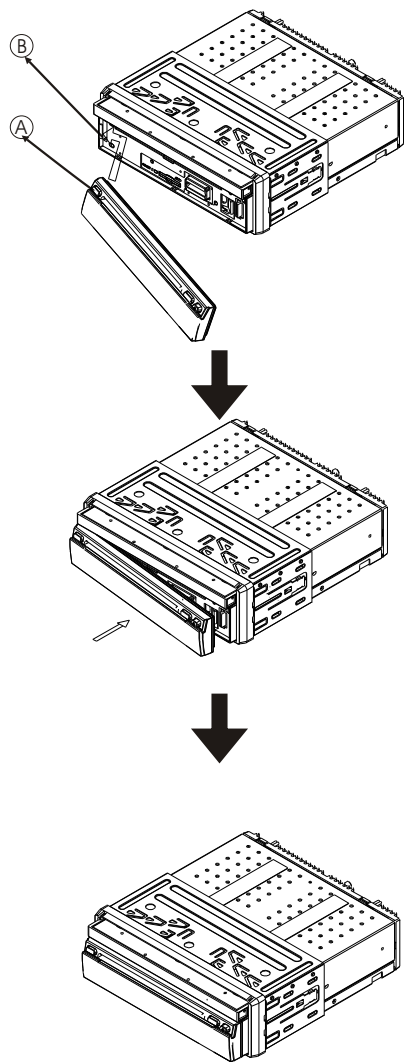
2. Put the keys into the host on both sides of the unit and hold the keys to the mount direction, then push the two sides outward, and pull them out. (As shown) .



Installation

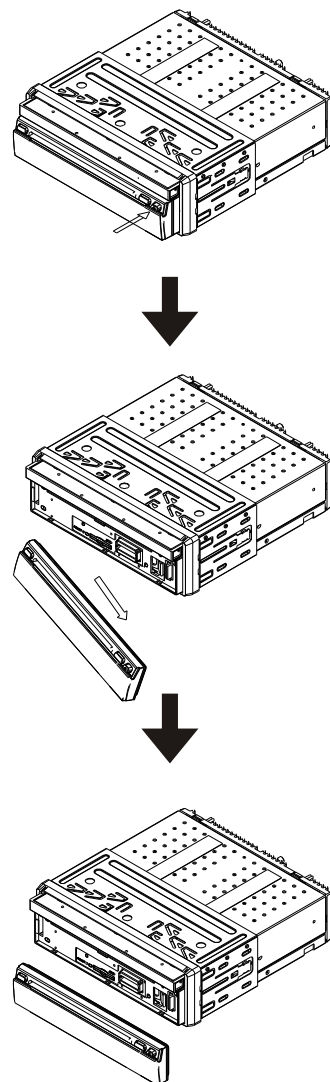
Install the Front Panel

Put notch ① (shown as picture) onto shaft ②. And then slightly press into the right side.



Detach the Front Panel

Press REL button in the upper right corner, and then the front panel will be folded down.



DVD/VCD/MP4

Selecting MENU

- 1 Selecting Menu: During DVD status, press ④ **MENU** to return to the root menu, all of the chapters will appear on monitor. You can press ②⑦ or ②⑧ button to select your desired chapter.
- 2 Selecting Title: During DVD status, press ③ **TITLE** to return the title menu, all of the titles will appear on monitor. You also can press ②⑦ or ②⑧ button to select your desired chapter.

■ Note:

- * Under DVD menu, touch the screen to select items.
- * If the touch menu options invalid or the disc does not support touch-TITLE, ④ that is the same as ②⑦ buttons on the remote control will display on the screen. Press ◀ to left, press ▶ to right, press ▲ to up, press ▼ to down and press ● to ENTER.

DVD SETUP MENU

Press ①⑨ **SETUP** on remote control or **MENU** on the main unit or ①③ in the monitor, main menu and sub-menu will appear on TFT, pressing ②⑦[▲][▼][▶][◀] on the remote control to select your desired items, then press ENTER.

Press ▲ to the pervious one, press **SETUP** or press [▲][▼][▶][◀] to move the cursor on “×”, then press ENTER to exit the menu setup.

■ Notes:

- * The selections are the preferred options that will be chosen if they are available on a disc. If the disc that is inserted does not have the preferred option then the discs own preference will be used.
- * Regarding **SETUP MENU**, please refer to the following pages for more details.
- * Some functions varies depending on the types of models or formats of the disc.
- * To touch the screen to select menu, touch it again to select the item.


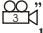
Changing the viewing angle (Multi-angle)

With DVDs featuring multi-angle (scenes shot from multiple angles) recordings, you can press **7 ANGLE** to switch among viewing angles during playback.

Selection options switch as follows:

ANGLE 1 — ANGLE 2 — ANGLE 3.....

■ Notes:

- * This function is operated by using the remote control.
- * This function only operates with DVDs featuring multi-angle recordings.
- * The “” mark on a DVD's package indicates it features multi-angle scenes. The number in the “” mark indicates the number of angles from which scenes were shot.
- * It is invalid to pressing ANGLE during fast forward/fast reverse or pause.

Selecting Channel

During VCD status, repeatedly press **6 AUDIO** button to select the following channel:



Selecting the corresponding channel to set the different sound characters.

■ Note:

- * This function is operated by using the remote control only.

Program Playing

During VCD mode, press **15 PROG**, the TFT displays the program menu. Press **NUMBER BUTTONS** to select the track Number and then press **27** to move the cursor to **START**, press **ENTER** to start program playing; move the cursor to EXIT and press **ENTER** to exit the program playing. Move the cursor to **⏮** and press **ENTER** to the previous page; move the cursor to **⏭** and press **ENTER** to the next page. During this process, press **18 ■** to cancel the program playing.

■ Note:

- * The function is only valid on remote control.
- * Press **22 CLEAR** to clear the mistake input.

Playing PBC (Menu)

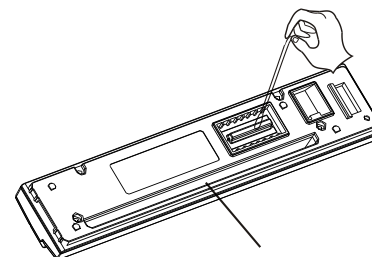
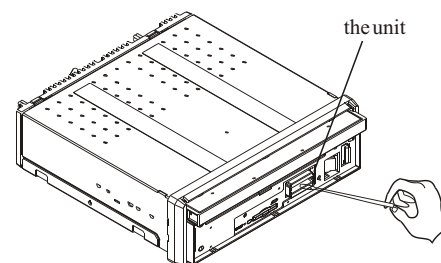
During VCD status, first press **3 TITLE**, PBC playback starts and **the menu of entire disc** appears on the monitor, and then you can select your favorite track by using **23 Number Buttons**. When a track is playing, you can press **4 MENU** to return to the menu if you would like to end the track and select others. To cancel PBC playing, press **3 TITLE** button again.

■ Note:

- * This function is operated by using the remote control.
- * **PBC** playing confirms to version 2.0 of VCD disc and SVCD disc only.

Clean the connector

If the connector of the unit and the front panel is dirty, the unit may does not work normally. To avoid this situation, detach the front panel and clean it with a cotton swab dipped in alcohol . Do not use excessive force or the connector will be damaged.



The back of the panel

■ Note:

- * For safety, before cleaning the connector, close the wage machine and remove the key from the ignition switch. Do not contact your fingers or any metal device t with the connector.

To Select Source by Menu

In any mode(except for DVD, SD, USB mode), press SRC, BACK/ in the monitor, the following menu will appear:



Press it to select your desired item, and press SET to enter into the main menu.

If you want to navigation, press NAVI; if it did not enter into, that means the unit does not include the function.

In any mode, press BACK to return to the previous mode.

Note:

- * If the font display in red, that means this function is null.

Reset the Unit

Operating the unit for the first time or after replacing the car battery, you must reset the unit.

Release the front panel at first, and then Press **RESET** button in the panel with a pointed object, (such as a ballpoint pen) to set the unit to initial status.

Note:

- * When some errors occur on the display, you can also press **RESET** button to resume to normal, and it will erase the clock setting and some memorized functions.
- * This function can only be operated by the head unit.

Turning the Unit On/Off

Briefly press **PWR** button to turn on the unit, press it again, the unit is still in the waiting status. Press and hold to turn off.

Note:

- * Pressing PWR button on the head unit also performs the same function.

Volume Control

Press **VOL+** button to increase the sound level and press **VOL-** button to decrease the sound level.

Note:

- * Rotating on the head unit also performs the same function.

Setting the Sound Characteristics

Repeatedly briefly press **SEL** button to select the desired mode in the following order:

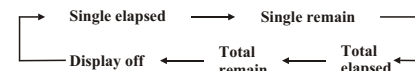


After selecting the desired mode, you can adjust the current level by pressing **VOL** buttons.

Note:

- * Briefly press and rotating button on the head unit also performs the same function.
- * During CD/MP3 mode, press SEL/-/+ to performs the same function.

During **VCD** status, press **OSD** button the display shows:



During **MP4** status, press **OSD** button the display shows:



Note:

- * This function is operated by using the remote control.

Setting the Playback Time

During DVD mode, press **GOTO** button to set the playing time, when the TFT display : *title/chapter/audio/subtitle/angle /title time/chapter time/repeat/time disp.* Press to select the options, press ENTER to set the status. Then press **NUMBER BUTTONS** or to set the current status.

During VCD mode, press **GOTO** button to set the playing time, when the TFT display : *track/disc time/track time/repeat /time disp.* Press to select the options, press ENTER to set the status. Then press **NUMBER BUTTONS** or to set the current status.

During MP4 playback, first press **GOTO**, and monitor shows : *---*, press your desired track by using number buttons and press **ENTER** to set the status. Second press **GOTO** button, and the monitor shows: *---:--*, input your desired time, then press **ENTER**.

Note:

- * This function is operated by using the remote control.
- * Press CLEAR to clear the mistake input.

Changing audio language (Multi-audio)

DVDs can provide audio playback with different language. With DVDs featuring multi-audio recordings, you can press **AUDIO** to switch between language and audio systems during playback.

Selection options switch as follows:

AUDIO 1 — AUDIO 2 — AUDIO 3.....

Note:

- * This function is operated by using the remote control.
- * This function only operates with DVDs featuring multi-audio recordings.
- * The number in the mark on a DVD's package indicates the number of recorded languages/audio systems.

Changing the subtitle language (Multi-subtitle)

With DVDs featuring multi-subtitle recordings. You can press **SUB-T** to switch between subtitle languages during playback. Selection options switch as follows:

Subtitles 1 — Subtitles 2 — — Subtitles OFF

Note:

- * This function is operated by using the remote control.
- * The number in the mark on a DVD's package indicates the number of recorded subtitle languages.

Playing Tracks at Random

During DVD/VCD/MP4 playback, press **16** **RDM** button on the remote control to play any track at random under the directory which you select. Press it again to return to normal playing.

Note:

- * Pressing **5** RDM on the main unit also performs the same function.

Repeat Playing

During DVD playback, press **15** **RPT** on the remote control to perform replaying function as follows:



During VCD/MP4 playback, press **RPT** on the remote control to TRACK REPEAT.

Note:

- * Pressing **5** RPT on the main unit also performs the same function.

Skip backward/forward/F.F /F.REW the playback

Press **20** (**◀** or **▶**) on remote control to perform fast reward or fast forward. Each pressing will change as follow:



Note:

- * Pressing and holding **◀** / **▶** on the head unit also performs the same function.

System Switch

During DVD/VCD mode, Press **11** **P/N** on remote control to set the TV standard to PAL or NTSC or AUTO system.



Note:

- * The function can be operated by selecting the DVD MENU SETUP.

Slow motion playback

During DVD mode, press **10** **1/2** to slow play. There are speeds as follows:



During VCD/MP4 mode, press **10** **1/2** to slow play. There are speeds as follows:

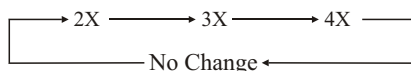


Note:

- * The function is only valid on remote control.

Increase the size of picture

During DVD/VCD/MP4 mode, Press **9** **ZOOM** to increase the picture in size. There are sizes as follow, Each pressing increases the size until the maximum size is reached.

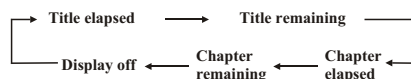


Note:

- * The function is only valid on remote control.
- * To remove the image by pressing **27** button.

On Screen Display

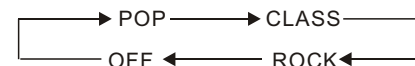
During DVD status, press **8** **OSD** button the display shows:



EQ Setting

While listening to the popular music, classic music or rock music, you can select the corresponding preset modes to adjust the sound quality perfectly by using **26** **EQ** button.

Press and hold **26** **EQ** button to choose the following modes in turn:



The default setting is OFF.

Note:

- * Pressing **3** EQ/AF also performs the same function.

Turning Loudness On/Off

Press and hold **25** **LOUD** button activate LOUD function. You can press this button to increase the low frequency, which can improve sensitivity for your ears. Pressing it again to quit this function.

Note:

- * Pressing **LOU/TA** also performs the same function.

Insert a SD Card

Common SD Card: insert a common SD card into **16** SD slot and the programs in the card will be played.

Eject a Disc

Press **11** **▲** button to eject or insert a disc.

Note:

- * Press **▲** on the remote control also performs the same function.

Mute Function

Press **12** **⏸** button to shut off the sound output. And “**⏸**” appears on the LCD. Press it again to resume to previous volume level.

Note:

- * Briefly pressing MUTE on the head unit also performs the same function.

Mode Selector

Repeatedly briefly pressing **1** **SOURCE** button to select the different modes available.

Note:

- * Briefly pressing MODE on the head unit also performs the same function.

Infrared Sensor:

Receptor **6** on the head unit for the card remote control.

Main Menu

Set up Main Menu



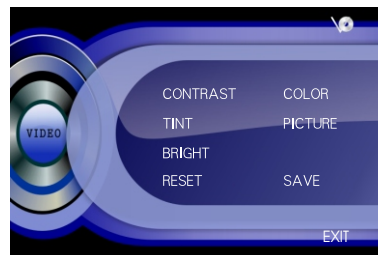
Press MENU in the above menu to recall the following menu:
Hold and press SETUP on the remote control or briefly press MENU on the main unit to enter the menu as follows:



This menu includes AUDIO, VIDEO, SOURCE, SYSTEM, EXIT. Press them in the monitor to set the desired status.

1.Video Adjust

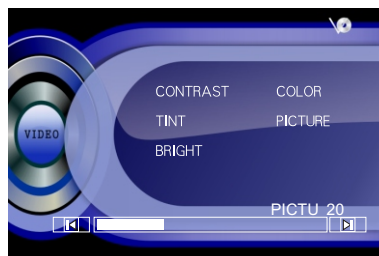
After selecting VIDEO, the sub menu will appear as follows:



In this menu you can adjust CONTRAST, COLOR, TINT, PICTURE, BRIGHT, EXIT.

Picture Adjust

Press PICTURE in this menu, it will appear as follows:



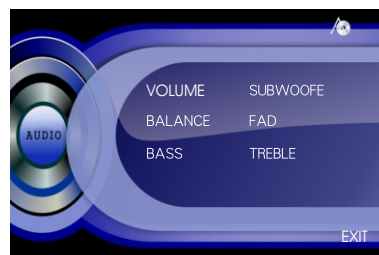
Press [Left] or [Right] to adjust the size, then press SAVE to save the setup, press EXIT to exit this menu.

Note:

- * Adjusting the other options perform the same operation.

2.Audio Adjust

After selecting AUDIO, the sub menu will appear as follows:



You can adjust VOLUME, SUBWOOFER, BALANCE, FAD, BASS, TREBLE, For example, press FAD, the setting menu will appear as follows:

DVD/VCD/MP4

DVD/VCD/MP4 Setup

During DVD/VCD/MP4 playback, touch the screen the bottom shows the following menu:



- [Play/pause] Play/pause
- [Stop] Stop
- [Decrease volume level] Decrease volume level
- [Increase volume level] Increase volume level
- [DVD setup menu] DVD setup menu
- [Mode selector] Mode selector

Note:

- * Press right corner repeatedly to play the next track(▶▶ shows), press left corner to play the previous track(◀◀ shows).

DVD/VCD/MP4 Play

Insert a disc into the slot ⑭, the unit will automatically switch on, if a disc is loaded, press **SOURCE** to start the playback. If the unit is in other menu, press DVD to switch to disc play.

Note:

- * Press MODE on the head unit to switch to DVD mode. When SD card and USB were inserted into, press this key again and again to switch among SD card, USB and disc.
- * Press [MODE] in the monitor perform the same function.

Selecting Tracks Fast

During DVD/MP4 playback, press ② ◀◀ to play previous track, press ② ▶▶ to play next track.

During VCD playback, first press ② ◀◀ to return to the beginning of the current track, press ② ◀◀ again within 3 seconds to play previous track, press ② ▶▶ to play next track.

Note:

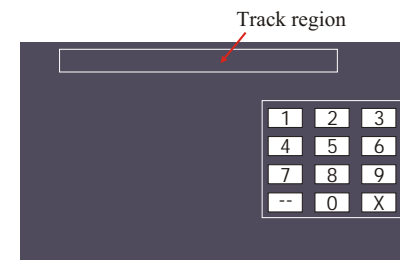
- * Pressing ⑦ ◀◀ / ▶▶ on the head unit or press left/right twice continuously in the monitor also perform the same function.

Number Buttons

Press one of ②③ **Number Buttons(0~9)** to select a track, it will be played automatically.

Note:

- * Press this region and the screen shows the following menu: number keys appears, touch the number to select tracks.
Touch the "X" to exit this menu.



- * Press ② CLEAR to clear the mistake input.

Pause the Playback

During DVD/VCD/MP4 playback, press ① || to switch between play and pause; During stop mode, press this button to resume playback mode.

Note:

- * Press [||] in the monitor or || on the head unit performs the same function.

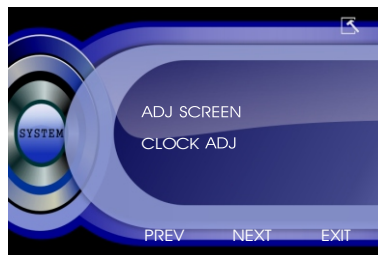
Stop the playback

During DVD/VCD playback, first press, ③ ■, then press ②⑦ or ②⑧ on the remote control to replay; press ③ ■ twice to stop playing completely, then press ②⑦ to return to the beginning of the current track. During MP4 playback, press ■ first, then press ②⑦ to return to the beginning of the current track.

Note:

- * Press [■] in the monitor perform the same function.

Press *NEXT* to display the menu follows,
press *PREV* to display the previous one.

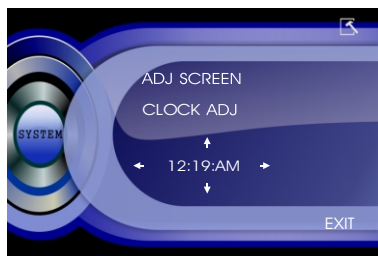


Adjust Screen

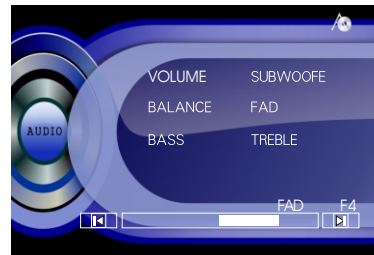


Press ADJ SCREEN to display the above menu, there are a square button in the top left corner. Press the square button at place ①, then the button will move to place ②, press it at place ②, it will move to place ③, then place ④, press SAVE at last.

Clock Adjust



Press CLOCK ADJ in the monitor to adjust the clock.



Press ◀ or ▶ to adjust the desired FAD level, press EXIT to exit this menu.

Note:

* Adjusting the other options perform the same operation.

3.Source Adjust

In the main menu, press SOURCE in the monitor, the sub menu will appear as follows:



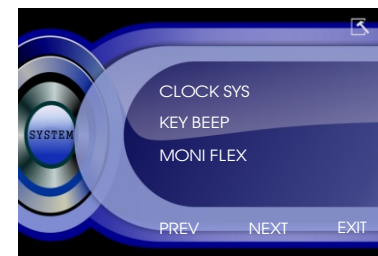
You can adjust above items to ON or OFF, press the corresponding button to set. If one of them was set OFF, that function is null. For example, to set the TV OFF, press SOURCE can not activate TV function. But can not set the current playback OFF.

Note:

* If the item can not be set "ON", then this model does not contain this function.

4.System Adjust

After selecting SYSTEM, the sub menu will appear as follows:



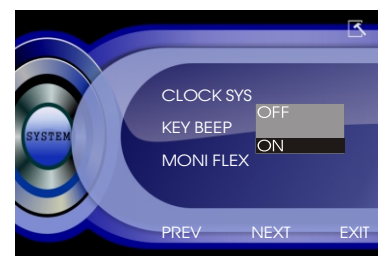
In this menu you can adjust CLOCK SYSTEM, KEY BEEP, MONITOR FLEX and so on.

Clock System



Press CLOCK SYSTEM in the monitor to set 12 HOUR or 24 HOUR in this menu.

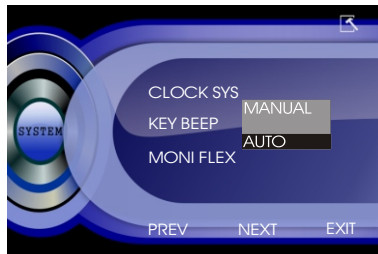
Key Beep



In this menu you can adjust KEY BEEP, press it in the monitor and select ON or OFF, the default setting is ON, it means when you press the keys, they can sound.

Main Menu

Monitor Flex



In this menu you can adjust MONITOR FLEX, press it in the monitor and select MANUAL or AUTO, the default setting is AUTO, it means the monitor will flex automatically.

Next Setup

Press \downarrow to display the menu follows, press \uparrow to display the previous one.

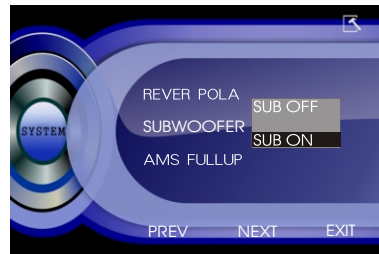


Reverse Pola



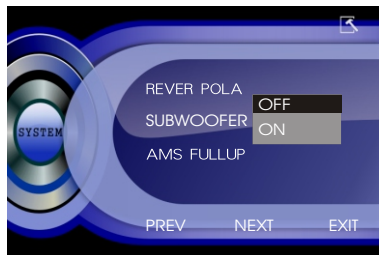
Setting REVERSE POLA in this menu. The signal is +12V when you back a car, please press BATTERY in the monitor; if the signal is 0V, please press GROUND.

Subwoofer



In this menu you can adjust SUBWOOFER, press it in the monitor and select ON or OFF, the default setting is ON.

AMS Fullup



In this menu to set the modes of AMS. When the setup is ON, the presettable stations are full, no new's is allowed. When you select OFF, it will searching continually.

Press \downarrow to display the menu follows, press \uparrow to display the previous one.



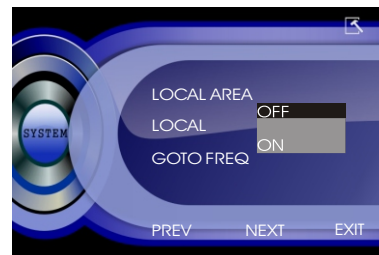
Main Menu

Local Area



You can select EUROPE or USA to search the stations quickly by your current area, also, you can select FM ONLY to receive the FM stations only.

Local



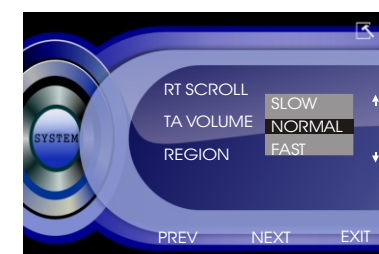
In this menu to search the LOCAL stations, when selected ON, the strong signal local stations can be received, when selected OFF, the weak signal out-of-town stations may be received.

Goto FREQ



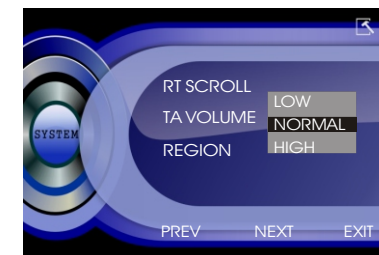
To select ON, you can using GOTO button on the remote control to select a station's frequency directly in radio mode.

RT Scroll



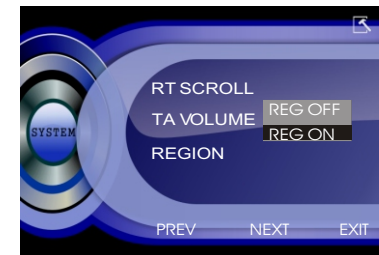
To select your desired speed, SLOW, NORMAL, FAST. The default settings is NORMAL.

TA Volume



To select your desired volume, LOW, NORMAL, HIGH. The default setting is NORMAL.

REGION



To set the AF searching region, the default setting is ON.